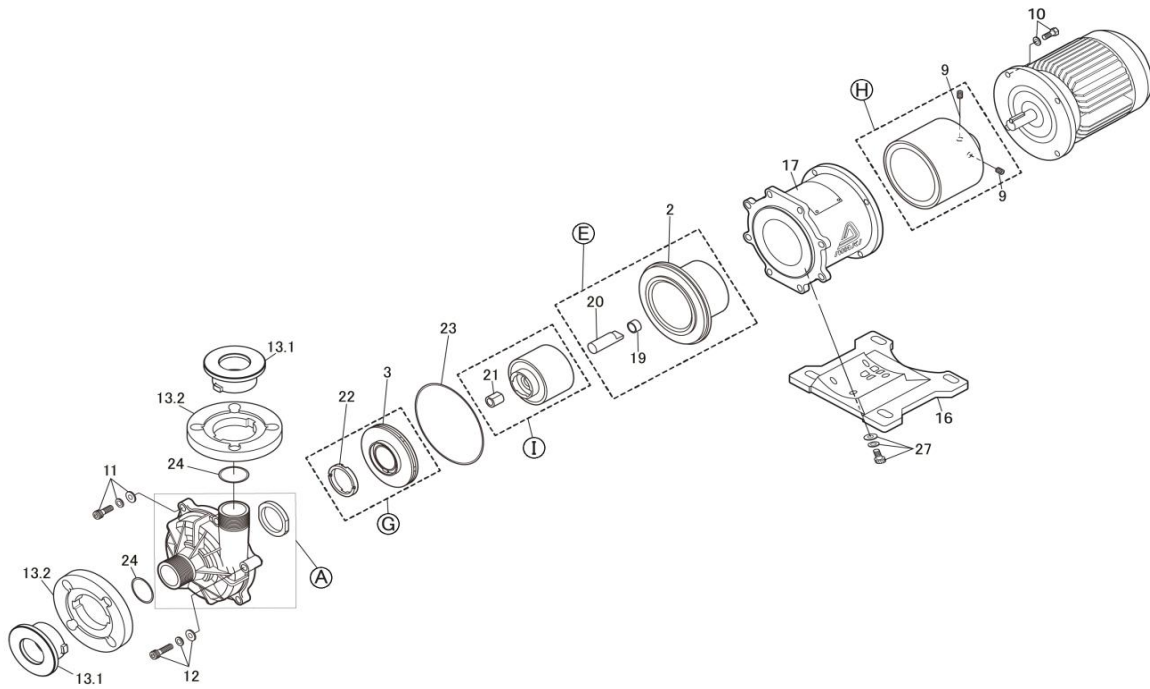


# MX-F400-L

No. 64-042  
Jan. 01, 2023



Item	Description	Q'ty	Type	Material	Part No.
1	Front Casing+Liner Ring Unit	1	CF•RF	CFRETFE+Al.Ceramic	<b>MX1093</b>
		1	KK	CFRETFE+SiC	<b>MX1094</b>
2	Rear Casing	1	All models	CFRETFE	<b>MX0431</b>
3	Impeller [04F]	1	∅ 97mm "T2" (50Hz)	CFRETFE	<b>MX0988</b>
		1	∅ 89mm "V" (50Hz)	CFRETFE	<b>MX0695</b>
		1	∅ 76mm "W" (50Hz)	CFRETFE	<b>MX0696</b>
5	Drive Magnet Unit [E0]	1	0,37kW	Aluminium+Magnet	<b>MX0215</b>
8	Magnet Capsule+Bearing Unit [04F]	1	CF	CFRETFE+Carbon+M.	<b>MX0424</b>
		1	RF	CFRETFE+PTFE+Mg.	<b>MX0425</b>
		1	KK	CFRETFE+SiC+Mag.	<b>MX0426</b>
10	Cap Bolt with S.W.	4	M8x20	A4 (SUS316 equiv.)	<b>BCW0820</b>
11	Cap Bolt with P.W. & S.W.	4	M8x30	A4 (SUS316 equiv.)	<b>BCKS0830</b>
12	Cap Bolt with P.W. & S.W.	2	M8x40	A4 (SUS316 equiv.)	<b>BCKS0840</b>
13.1	Flange Inner	2	40mm	CFRETFE	<b>MX1092</b>
13.2	Flange Outer	2	40mm	GFRPP	<b>MX1075</b>
16	Base	1		GFRPP	<b>MX0239</b>
17	Adapter	1	IEC71 (B5)	FC200	<b>MX0395</b>
19	Rear Thrust	1	All models	CFRETFE	<b>MX0428</b>
20	Spindle	1	CF•RF	Alumina Ceramic	<b>MX0118</b>
		1	KK	SiC	<b>MX0427</b>
21	Bearing	1	CF	High Density Carbon	<b>MX0475</b>
		1	RF	PTFE	<b>MX0212</b>
		1	KK	SiC	<b>MX0476</b>
22	Mouth Ring	1	CF•RF	PTFE	<b>MX0208</b>
		1	KK	SiC	<b>MX0472</b>
23	O-Ring, G-135	1	( ) V	FKM-A	<b>MX0129</b>
		1	( ) E	EPDM	<b>MX0235</b>
		1	( ) A	Aflas®	<b>MX0774</b>
24	O-Ring, AS568-129	2	( ) V	FKM-A	<b>MX0130</b>
		2	( ) E	EPDM	<b>MX0233</b>
		2	( ) A	Aflas®	<b>MX0773</b>
27	Cap Bolt with P.W. & S.W.	4	M8x20	A4 (SUS316 equiv.)	<b>BCK0820</b>
A	Rear Casing Ass'y <2+19+20>	1	CF•RF	CFRETFE+CE	<b>MX0499</b>
		1	KK	CFRETFE+SiC	<b>MX0500</b>
B	Impeller+Mouth Ring Assembly <3+22> [50Hz]	1	CFT2•RFT2	CFRETFE+PTFE	<b>MX0987</b>
		1	KKT2	CFRETFE+SiC	<b>MX9988</b>

△Subject to change without prior notice! △Actual pump may differ from the exploded view!