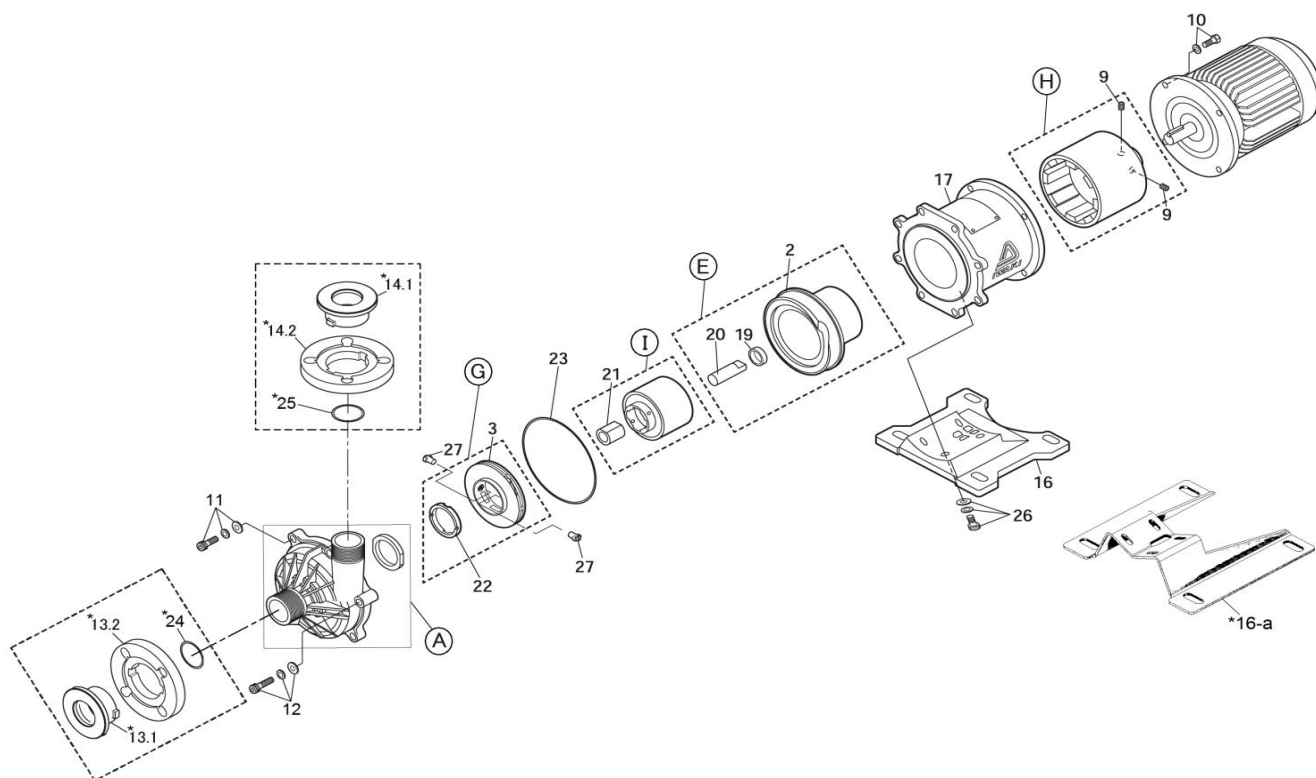


MX-403(H)-(L)

No. 62-049
Jan. 01, 2023



Item	Description		Q'ty	Remark	MX-403 (2,2kW)		MX-403H (2,2kW)	
					Part No.		Part No.	
A	Front Casing+L.R. Unit		1	GFRPP+CE	MX0931		MX0934	
2	Rear Casing		1	GFRPP	MX0802		MX0807	
3	Impeller <50Hz>	Ø158mm [22P5]	1	GFRPP	MX0322			
		Ø168mm [22HP5]	1	GFRPP			MX0325	
H	Drive Magnet Unit [J3]		1	FCD450+Mg.	MX0323		⇐	
I	Magnet Capsule+Bearing Assembly	CV•CE	1	PP+Carbon+Mg.	MX0186		⇐	
		RV•RE	1	PP+PTFE+Mg.	MX0187		⇐	
10	Hex. (or Cap) Bolt with S.W.	M10x25	4	Stainless Steel	BCW1025		⇐	
11	Cap Bolt with P.W. & S.W.	M10x55	7	Stainless Steel	BCKS1055		⇐	
12	Cap Bolt with P.W. & S.W.	M10x60	1	Stainless Steel	BCKS1060		⇐	
16	Base		1	GFRPP	MX0311		⇐	
*16-a	*Base for Ex-Motor		1	1.4571	8900100012		⇐	
17	Adapter (IEC90•B5)		1	FC200	MX0317		⇐	
19	Rear Thrust		1	CFRETPE	MX0183		⇐	
20	Spindle		1	Alumina Ceramic	MX0182		⇐	
21	Bearing	CV•CE	1	Carbon	MX0306		⇐	
		RV•RE	1	PTFE	MX0307		⇐	
22	Mouth Ring		1	PTFE	MX0303		⇐	
23	O-Ring, G-195	CV•RV	1	FKM-A	MX0180		⇐	
		CE•RE	1	EPDM	MX0302		⇐	
26	Cap Bolt with P.W. & S.W.	M8x20	4	Steel (or S.S.)	BCK0820		⇐	
27	Lock Pin		2	GFRPPS	MX0308		⇐	
E	Rear Casing Assembly <2+19+20>		1	All Models	MX0803		MX0808	
G	Impeller+Mouth Ring Ass'y <3+22>		1	50Hz	MX0184		MX0191	
*13-1	Flange 'IN' Inner	50mm	1	GFRPP	MX1080		⇐	
*13-2	Flange 'IN' Outer	50mm	1	GFRPP	MX1081		⇐	
*24	O-Ring, AS568-136	CV•RV	1	FKM-A	MX0181		⇐	
		CE•RE	1	EPDM	MX0300		⇐	
*14-1	Flange 'OUT' Inner	40mm	1	GFRPP	MX1074		⇐	
*14-2	Flange 'OUT' Outer	40mm	1	GFRPP	MX1075		⇐	
*25	O-Ring, AS568-129	CV•RV	1	FKM-A	MX0130		⇐	
		CE•RE	1	EPDM	MX0233		⇐	

Note: Items asterisked (*) are optional parts.

△ Subject to change without prior notice! △ Actual pump may differ from the exploded view!