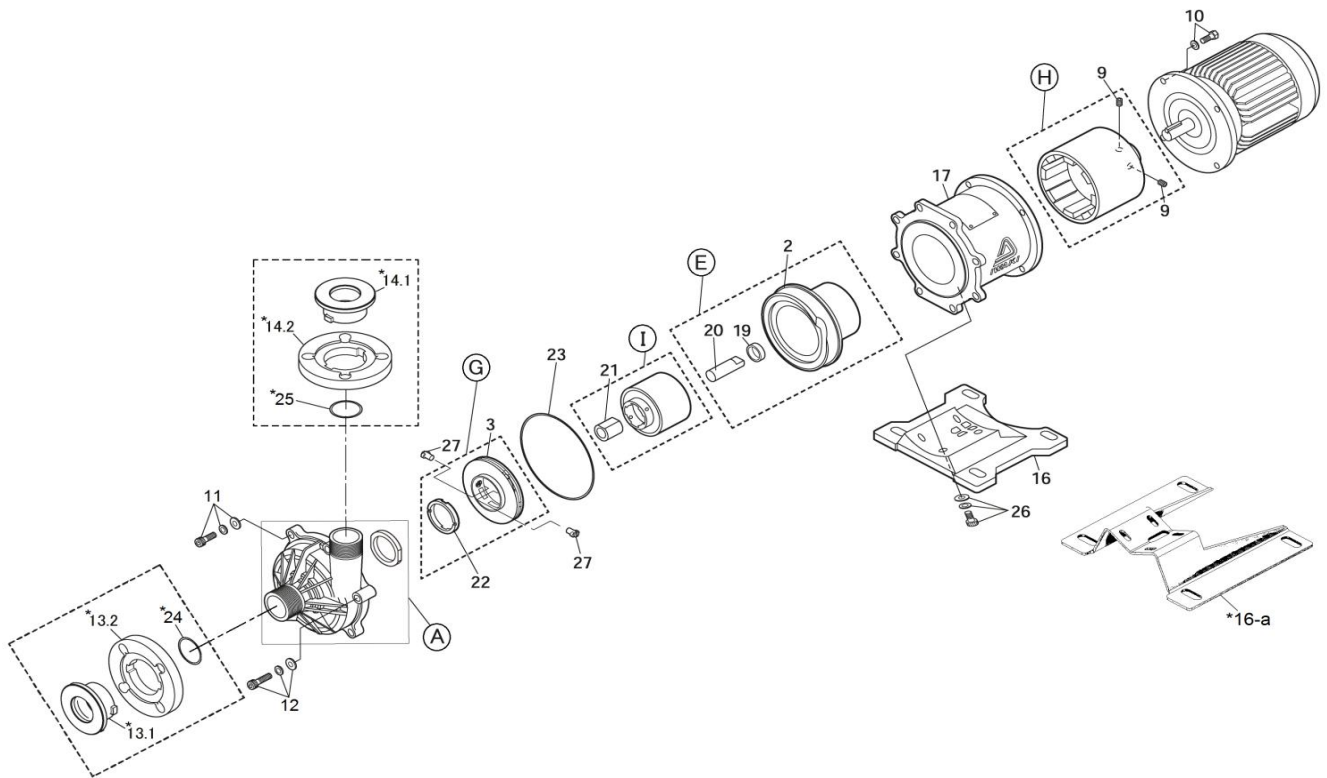


MX-402(H)-(L)

No. 62-048
Jan. 01, 2023



Item	Description		Q'ty	Remark	MX-402 (1,5kW)		MX-402H (1,5kW)		
					Part No.		Part No.		
A	Front Casing+Liner Ring Unit		1	GFRPP+CE	MX0931		MX0934		
2	Rear Casing		1	GFRPP	MX0802		MX0807		
3	Impeller <50Hz>	Ø148,5mm [15P5]	1	GFRPP	MX0304				
		Ø160mm [15HP5]	1	GFRPP			MX0319		
H	Drive Magnet Unit [J2]		1	FCD450+Mg.	MX0310		⇐		
I	Magnet Capsule+Bearing Assembly		CV•CE	1	PP+Carbon+Mg.	MX0178		⇐	
			RV•RE	1	PP+PTFE+Mg.	MX0179		⇐	
10	Hex. (or Cap) Bolt with S.W.	M10x25	4	Stainless Steel	BCW1025		⇐		
11	Cap Bolt with P.W. & S.W.	M10x55	7	Stainless Steel	BCKS1055		⇐		
12	Cap Bolt with P.W. & S.W.	M10x60	1	Stainless Steel	BCKS1060		⇐		
16	Base		1	GFRPP	MX0311		⇐		
*16-a	*Base for Ex-Motor		1	1.4571	8900100012		⇐		
17	Adapter (IEC90•B5)		1	FC200	MX0317		⇐		
19	Rear Thrust		1	CFRETFE	MX0183		⇐		
20	Spindle		1	Alumina Ceramic	MX0182		⇐		
21	Bearing		CV•CE	1	Carbon	MX0306		⇐	
			RV•RE	1	PTFE	MX0307		⇐	
22	Mouth Ring		1	PTFE	MX0303		⇐		
23	O-Ring, G-195		CV•RV	1	FKM-A	MX0180		⇐	
			CE•RE	1	EPDM	MX0302		⇐	
26	Cap Bolt with P.W. & S.W.	M8x20	4	Steel (or S.S.)	BCK0820		⇐		
27	Lock Pin		2	GFRPPS	MX0308		⇐		
E	Rear Casing Assembly <2+19+20>		1	All Models	MX0803		MX0808		
G	Impeller+Mouth Ring Ass'y <3+22>		1	50Hz	MX0176		MX0190		
*13-1	Flange 'IN' Inner	50mm	1	GFRPP	MX1080				
*13-2	Flange 'IN' Outer	50mm	1	GFRPP	MX1081		⇐		
*24	O-Ring, AS568-136		CV•RV	1	FKM-A	MX0181		⇐	
			CE•RE	1	EPDM	MX0300		⇐	
*14-1	Flange 'OUT' Inner	40mm	1	GFRPP	MX1074		⇐		
*14-2	Flange 'OUT' Outer	40mm	1	GFRPP	MX1075		⇐		
*25	O-Ring, AS568-129		CV•RV	1	FKM-A	MX0130		⇐	
			CE•RE	1	EPDM	MX0233		⇐	

Note: Items asterisked (*) are optional parts.

⚠ Subject to change without prior notice! ⚠ Actual pump may differ from the exploded view!