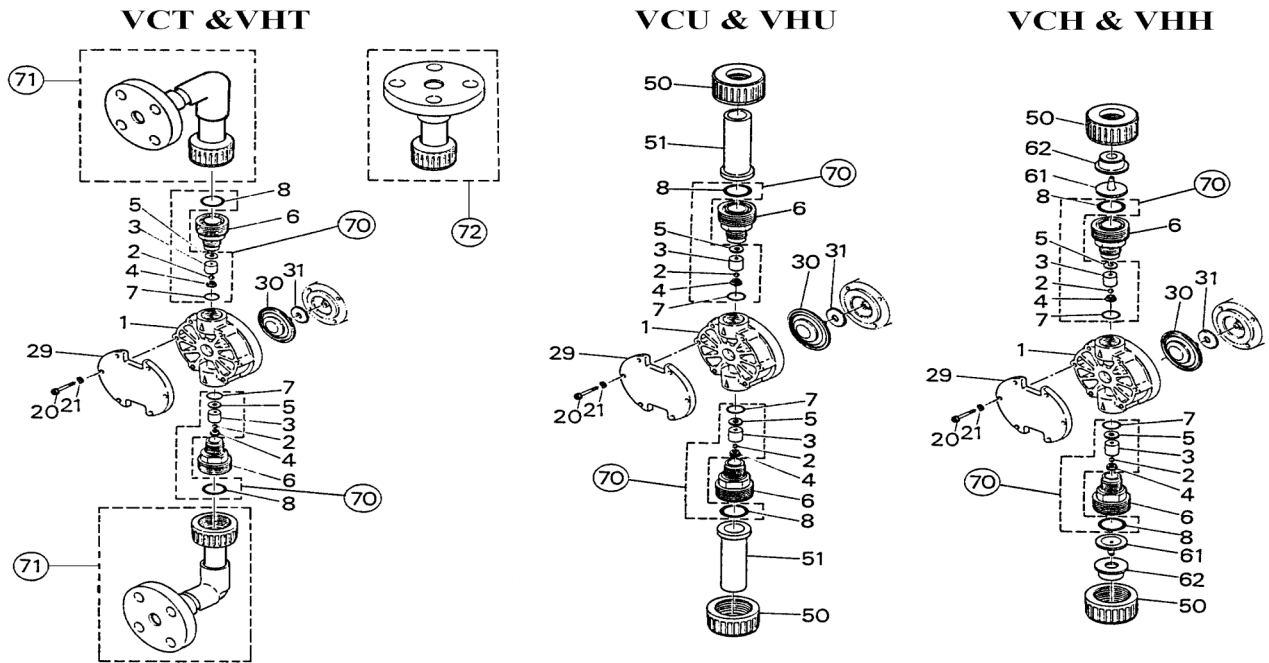


LK-F31•32 (PVC)

No. 85-052
Mar. 01, 2006



Item	Description	Q'ty	Material	LK-F31•32	
				Part No.	
1	Pump Head	1	PVC	L0770	
2	Valve Ball	VC	Alumina Ceramic	L0063	
		VH	Hastelloy C 276	L0062	
3	Valve Guide	2	PVC	L0064	
4	Valve Seat	VC	FKM-A	L0066	
		VH	EPDM	L0065	
5	Valve Gasket	2	PTFE	L0068	
6	Adapter	2	PVC	L0072	
7	O-Ring, P-16	VC	FKM-A	L0074	
		VH	EPDM	L0073	
8	O-Ring, P-20	VC	FKM-A	L0016	
		VH	EPDM	L0015	
20	Hex. Head Bolt	M5x45	SUS304 equivalent	L0246	
21	Spring Washer	M5	SUS304 equivalent	L0048	
29	Reinforcing Plate	1	Steel	L0771	
30	Diaphragm	1	PTFE (+EPDM)	L0080	
31	Retainer Plate	1	SUS304	L0081	
50	Nut <"U"•"H">	2	PVC	L0022	
51	Union (VP16) <"U">	2	PVC	L0024	
61	Tube Insert (12x18mm) <"H">	2	PVC	L0086	
62	Ferrule (12x18mm) <"H">	2	Steel	L0087	
70	Valve Set	VC	Ceramic+FKM-A	L0070	
		VH	HC276+EPDM	L0069	
71	Flange Unit (Elbow) <"T">	DN 15	PVC	L1413	
*71	Flange Unit (Elbow)	JIS 15	PVC	L0030	
*72	Flange Unit (Straight)	JIS 15	PVC	L0029	

Note: Items Nos. 71 and 72 marked with * (JIS) are optional parts.

△ Subject to change without prior notice! △ Actual pump may differ from the exploded view!