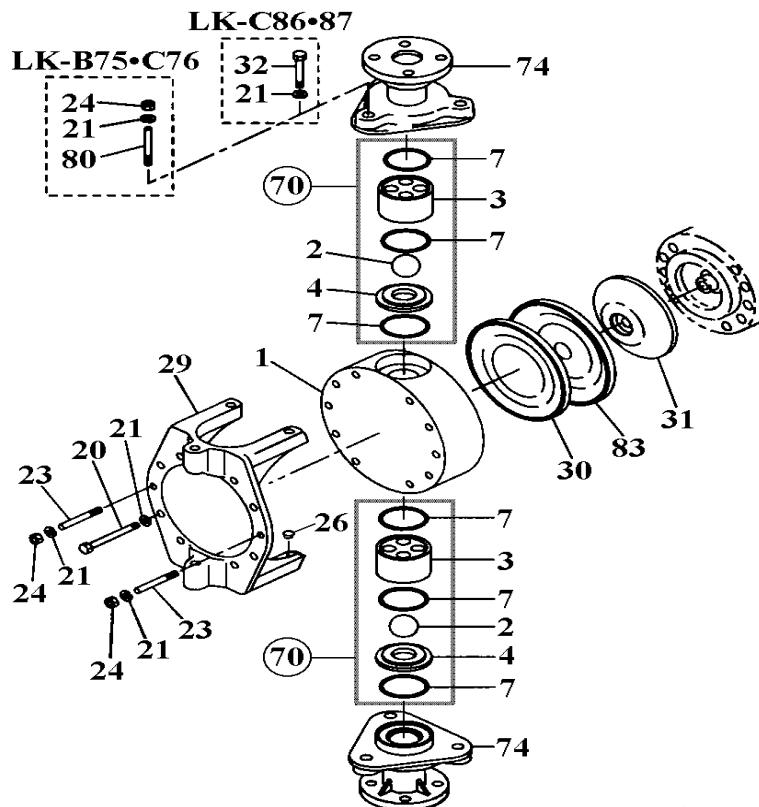


LK-B75•C76•86•87 (PVC)

No. 85-057
Mar. 01, 2006



Item	Description	Q'ty	Material	LK-B75•C76		LK-C86•87	
				Part No.		Part No.	
1	Pump Head	1	PVC	L1463		L0709	
2	Valve Ball	VC	Alumina Ceramic	L0621		L0711	
		VS4	SUS304	L0198		L0712	
3	Valve Guide	2	PVC	L1464		L0713	
4	Valve Seat	2	PVC	L1466		L0715	
7	O-Ring, G-50•G-80	VC	FKM-A	L1469		L0723	
		VS4	EPDM	L1468		L0724	
20	Hex. Head Bolt	M12x105	SUS304 equivalent	L1473			
		M12x140	SUS304 equivalent			L1484	
21	Spring Washer	M12	SUS304 equivalent	L0208		ï	
23	Stud Bolt	M12x125	SUS304	L1474			
		M12x165	SUS304			L1485	
24	Hex. Nut	M12	SUS304 equivalent	L1462		ï	
26	Insert Bumper	2	NBR	L1455		ï	
29	Reinforcing Plate	1	FC250	L1475		L1487	
30	Diaphragm	1	PTFE (+EPDM)	L0210		L0729	
31	Retainer Plate	1	Steel	L1395		L1396	
32	Hex. Head Bolt	M12x85	SUS304 equivalent			L1488	
70	Valve Set	VC	Ceramic+FKM-A	L1472		L0719	
		VS4	SUS304+EPDM	L1470		L0720	
74	Flange Unit "T"	DN 50	PVC				
		DN 65	PVC			L9969	
80	Stud Bolt	M12x95	SUS304	L1477			
83	Rear Sheet	1	PTFE	L0429		L0735	
*74	Flange Unit	JIS50•65	PVC	L1476		L1489	

Note: Item No. 74 marked with * (JIS) is an optional part.

△ Subject to change without prior notice! △ Actual pump may differ from the exploded view!