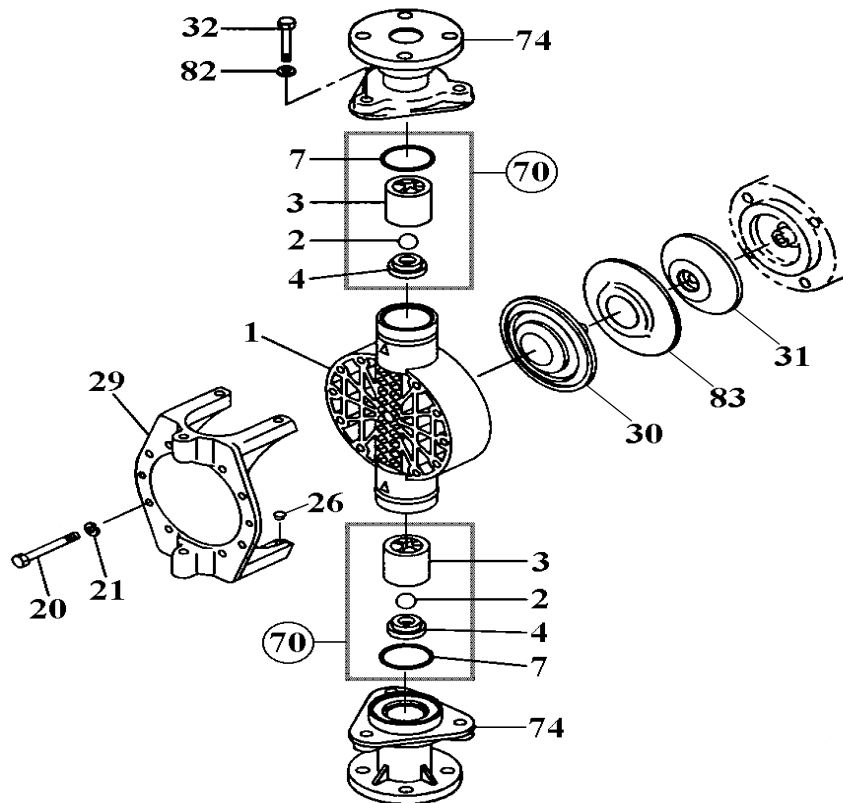


# LK-A65•B65 (PVC)

No. 85-056  
Mar. 01, 2006



					<b>LK-A65•B65</b>	
Item	Description		Q'ty	Material	Part No.	
1	<b>Pump Head</b>		1	PVC	<b>L1225</b>	
2	<b>Valve Ball</b>	VC	2	Alumina Ceramic	<b>L0620</b>	
		VS4	2	SUS304	<b>L0179</b>	
3	<b>Valve Guide</b>		2	PVC	<b>L0180</b>	
4	<b>Valve Seat</b>		2	PVC	<b>L0181</b>	
7	<b>O-Ring, G-65</b>	VC	2	FKM-A	<b>L0187</b>	
		VS4	2	EPDM	<b>L0186</b>	
20	<b>Hex. Head Bolt</b>	<b>M10x100</b>	10	SUS304 equivalent	<b>L0188</b>	
21	<b>Spring Washer</b>	<b>M10</b>	10	SUS304 equivalent	<b>L0189</b>	
26	<b>Insert Bumper</b>		2	NBR	<b>L1455</b>	
29	<b>Reinforcing Plate</b>		1	FC250	<b>L1452</b>	
30	<b>Diaphragm</b>		1	PTFE (+EPDM)	<b>L0191</b>	
31	<b>Retainer Plate</b>		1	Steel	<b>L1394</b>	
32	<b>Hex. Head Bolt</b>	<b>M12x70</b>	6	Carbon Steel	<b>L1454</b>	
70	<b>Valve Set</b>	VC	2	Ceramic+FKM-A	<b>L0183</b>	
		VS4	2	SUS304+EPDM	<b>L0182</b>	
74	<b>Flange Unit "T"</b>	<b>DN 40</b>	2	PVC		
82	<b>Spring Washer</b>	<b>M12</b>	6	SUS304 equivalent	<b>L0208</b>	
83	<b>Rear Sheet</b>		1	PTFE	<b>L0425</b>	
*74	<b>Flange Unit</b>	<b>JIS 40</b>		PVC	<b>L1456</b>	

Note: Item No. 74 marked with \* (JIS) is an optional part.

△ Subject to change without prior notice!    △ Actual pump may differ from the exploded view!