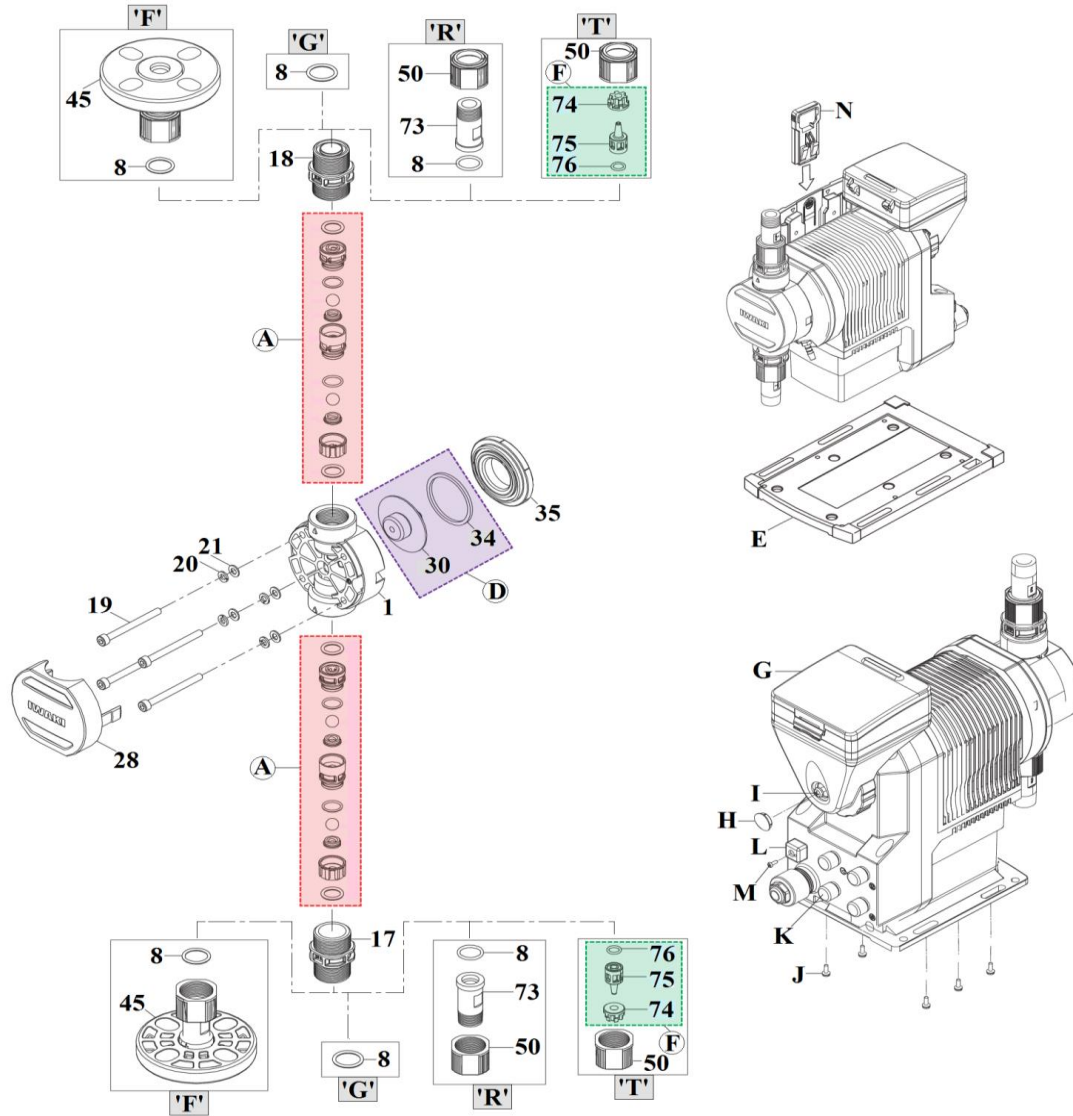


# IX-B015T (PVDF)



#	Item	Description	Q'ty	Remark	Part No.
	1	Pump Head	1	PVDF	IX0294
	8	O-Ring <P-18>	2	FKM-A	IX0256
			2	EPDM	IX0257
	17	IN Adapter	1	PVDF	IX0261
	18	OUT Adapter	1	PVDF	IX0262
	19	Hex. Bolt <M5x55>	4	SUS316	IX0263
	20	Spring Washer <M5>	4	SUS316L	IX0264
	21	Plate Washer <M5>	4	SUS316	IX0265
	28	Bolt Cover	1	PPE	IX0266
	30	Diaphragm Unit	1		IX0295
	34	Gasket	1	Silicone	IX0296
	35	Bracket Spacer	1	GFRPP	IX0297
	45	Flange Unit	'F'	DN15	IX0270
	50	Nut	'R'	GFRPP	IX0271
			'T'	GFRPP	IX0272
	73	Fitting <R1/2>	'R'	PVDF	IX0273
	74	Hose Stopper	'T'	GFRPPS	IX0275

Item	Description	Q'ty	Remark	Part No.	
75	Hose Adapter	'T'	2	PVDF	IX0279
76	O-Ring <P-9>	TC-T	2	FKM-A	IX0281
		TE-T	2	EPDM	IX0282
A	Valve Set	TC	2		IX0283
		TE	2		IX0284
D	Diaphragm Set	1		IX0298	
E	Base	1	GFRPPE	IX0333	
F	Connector Set	TC	2	4x6mm	IX0286
		TE	2		IX0287
G	CNT. Case Cover	1	PC	IX0330	
H	CNT. Cap	1	GFRPPE	IX0331	
I	Screw w/P•SW <5x16>	1	S4 equiv.	IX0332	
J	Screw w/P•SW <4x12>	6	S4 equiv.	IX0334	
K	DIN Cap	4	EPDM	IX0335	
L	Connector Cover	1	EPDM	IX0336	
M	Screw <M3x12>	1	SUS304	IX0337	
N	Mounting Adapter	1	GFRPPE	IX0338	

⚠ Subject to change without prior notice! ⚠ Actual pump may differ from the exploded view!